



# 100 Watt

## AS100M6-32

166mm 32Cells PV Module

### Electrical Characteristics

Module Type	AS100M6-32
	STC
Maximum Power- Pmax(W)	100
Open Circuit Voltage - Voc(V)	21.98
Short- Circuit Current - Isc(A)	5.64
Voltage at Pmax -Vmp(V)	19.74
Current at Pmax - Imp(A)	5.07
Module Efficiency -ηm(%)	18.16
Power Tolerance(W)	0 ~ +3%
Maximum System Voltage(V)	700Vdc (IEC / UL)
Maximum Series Fuse Rating (A)	10A

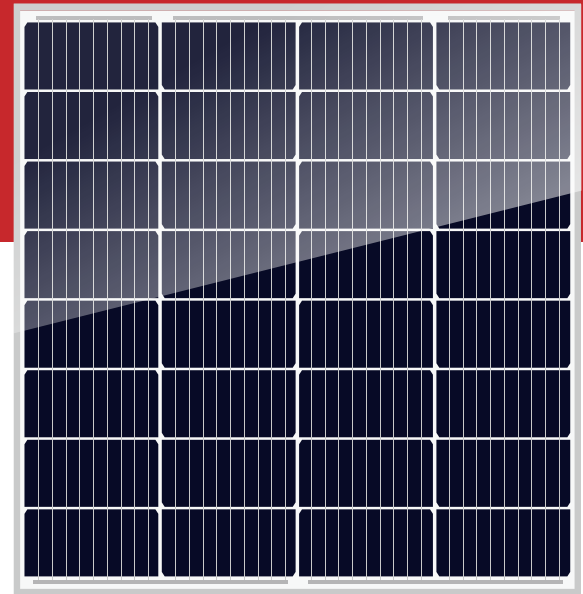
STC : Irradiance 1000W/m<sup>2</sup>, Cell Temperature 25°C, AM 1.5

### Mechanical Specifications

External Dimensions	700*725*30mm
Weight	5.3kg
Solar Cells	Mono crystalline 166X83mm (4X8pcs)
Front Glass	3.2 mm tempered glass
Frame	Aluminum
Junction Box	IP67
Output Cables	50cm, length can be customized
Connector	MC4 Compatible
Mechanical Load	Front Side Max. 5400Pa, Rear Side Max. 2400Pa

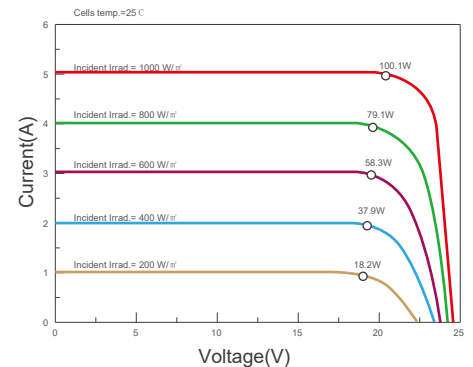
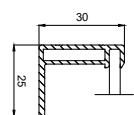
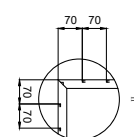
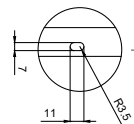
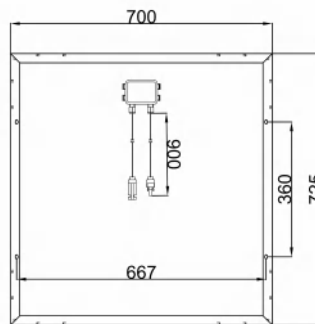
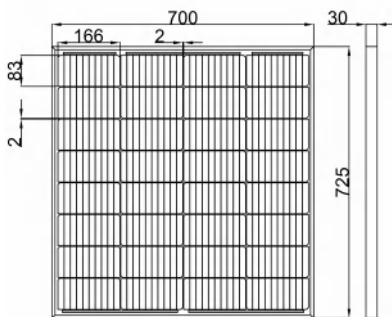
### Temperature Characteristics

Pmax Temperature Coefficient	-0.350%/°C
Voc Temperature Coefficient	-0.270%/°C
Isc Temperature Coefficient	+0.048%/°C
Operating Temperature	-40~+85°C
Nominal Operating Cell Temperature(NOCT)	45±2°C



### Packing Configuration

Module Type	AS100M6-32
Module Dimensions	700*725*30mm
Pallet Dimensions	1100*1462*1572mm
Pallet Weight	240kg
Pieces/Pallet	140pcs



Specs are subject to change without further notification